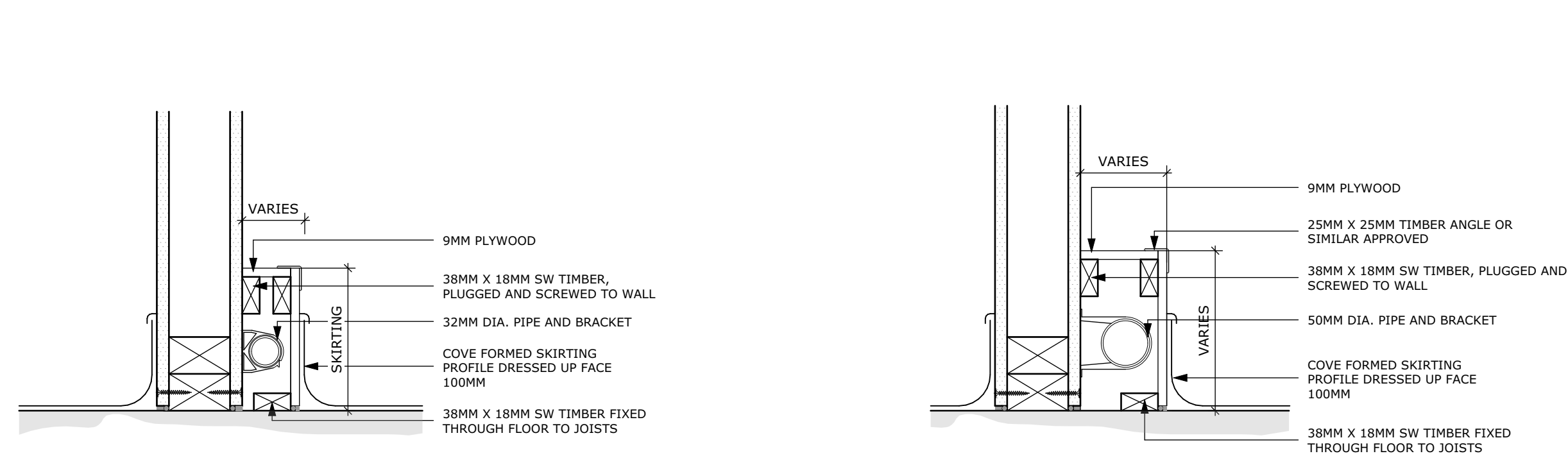
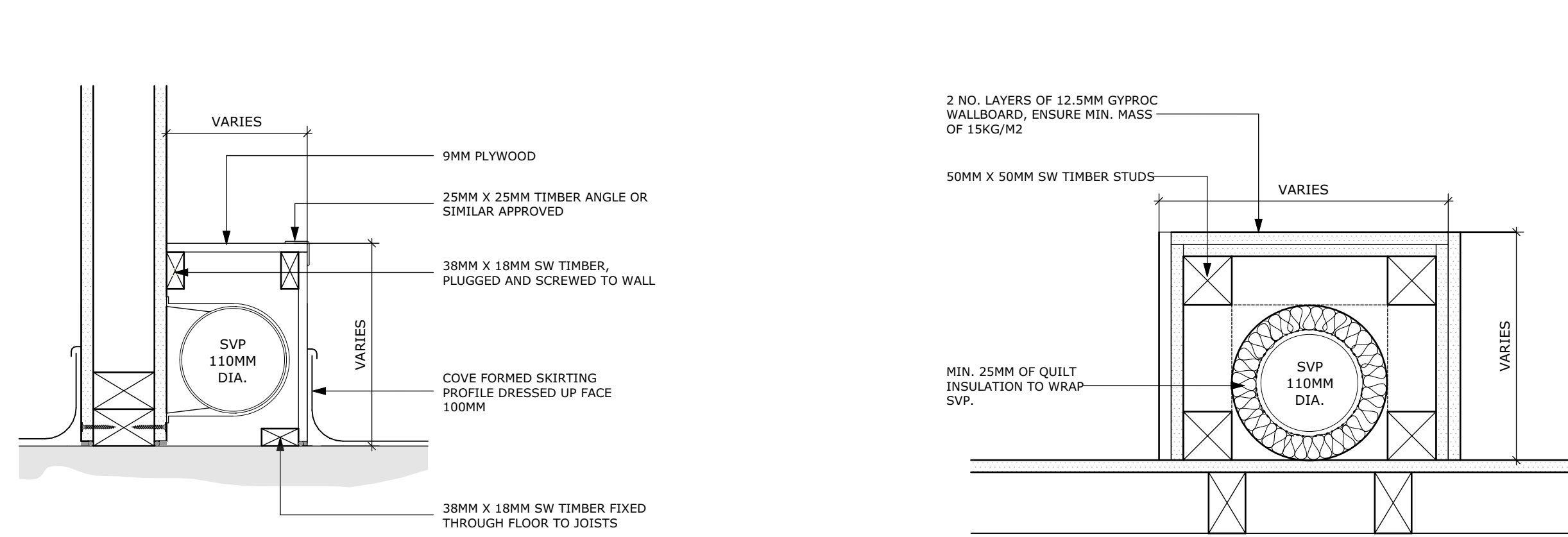


Typical Details - Sheet 1



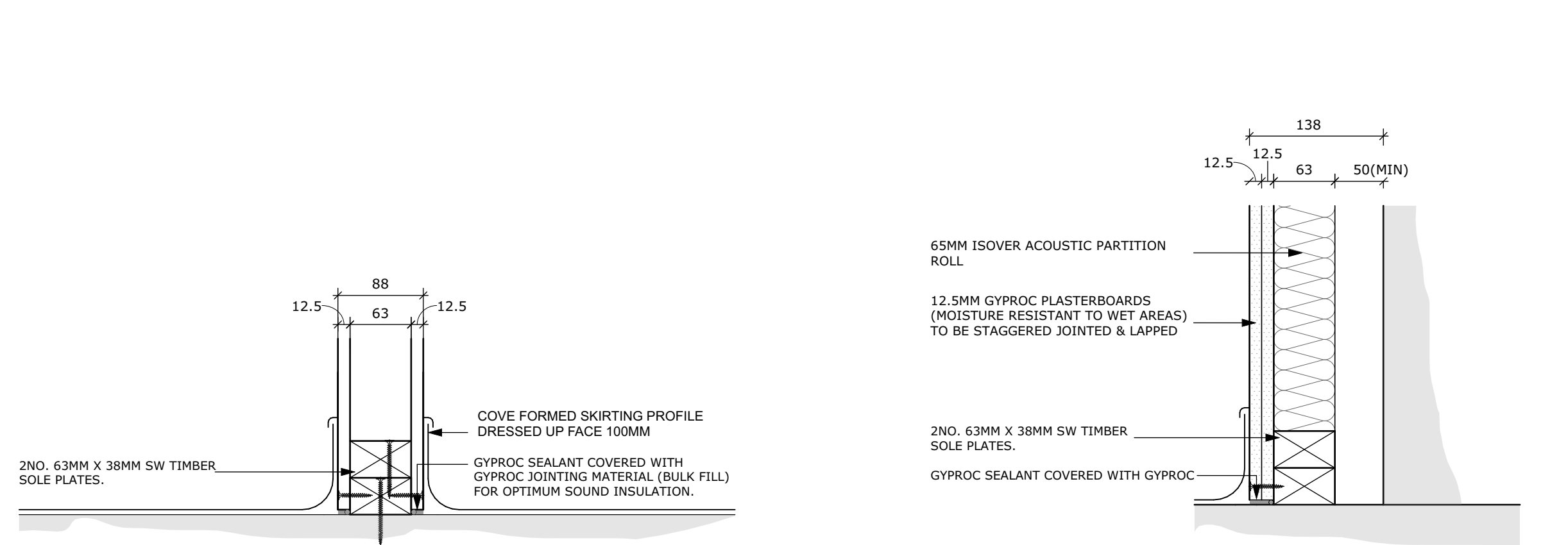
Skirting Boxing 32mm Waste Detail

Scale: 1:5



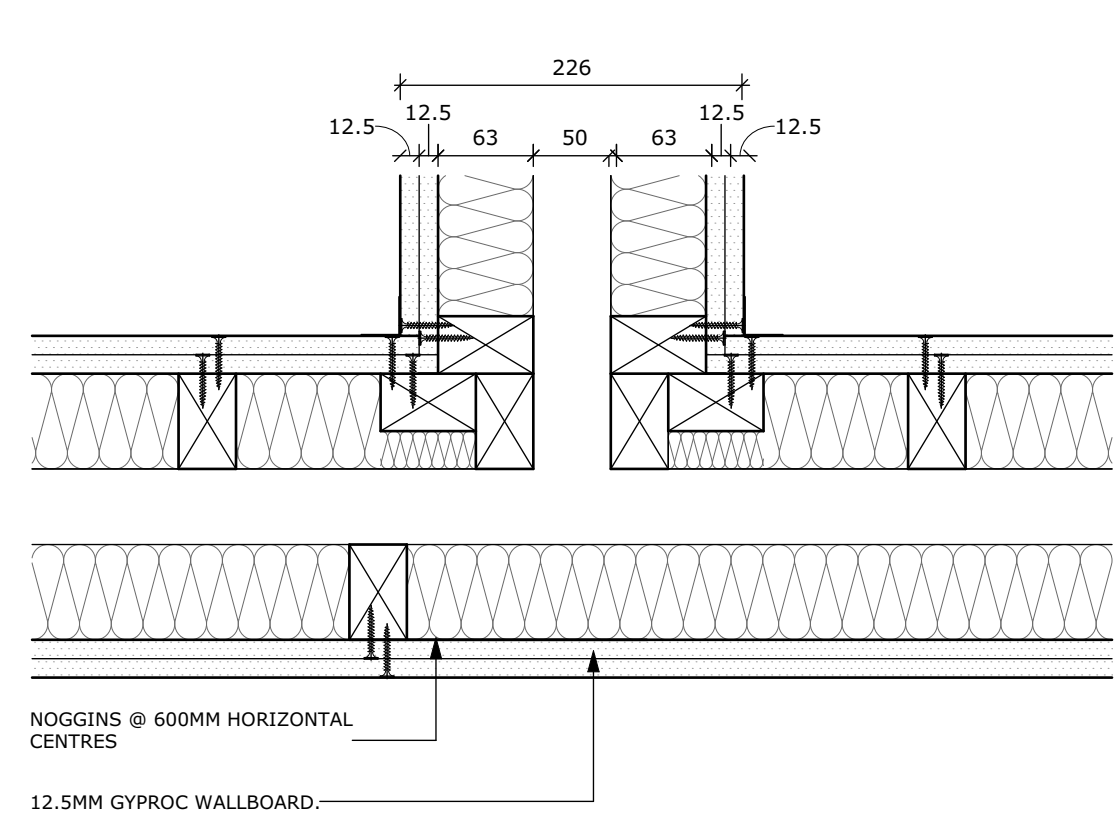
Skirting Boxing 110mm Waste Detail

Scale: 1:5



Typical Base Detail

Scale: 1:5



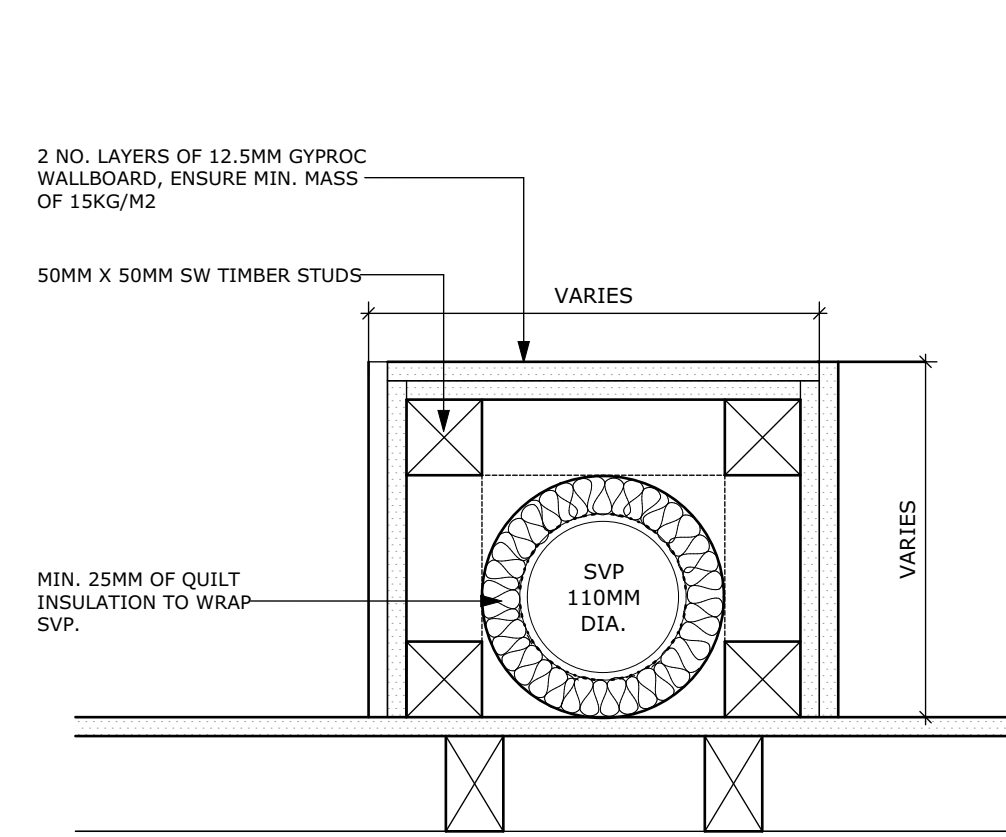
PW01 - Typical 'T' Junction Detail

Scale: 1:5



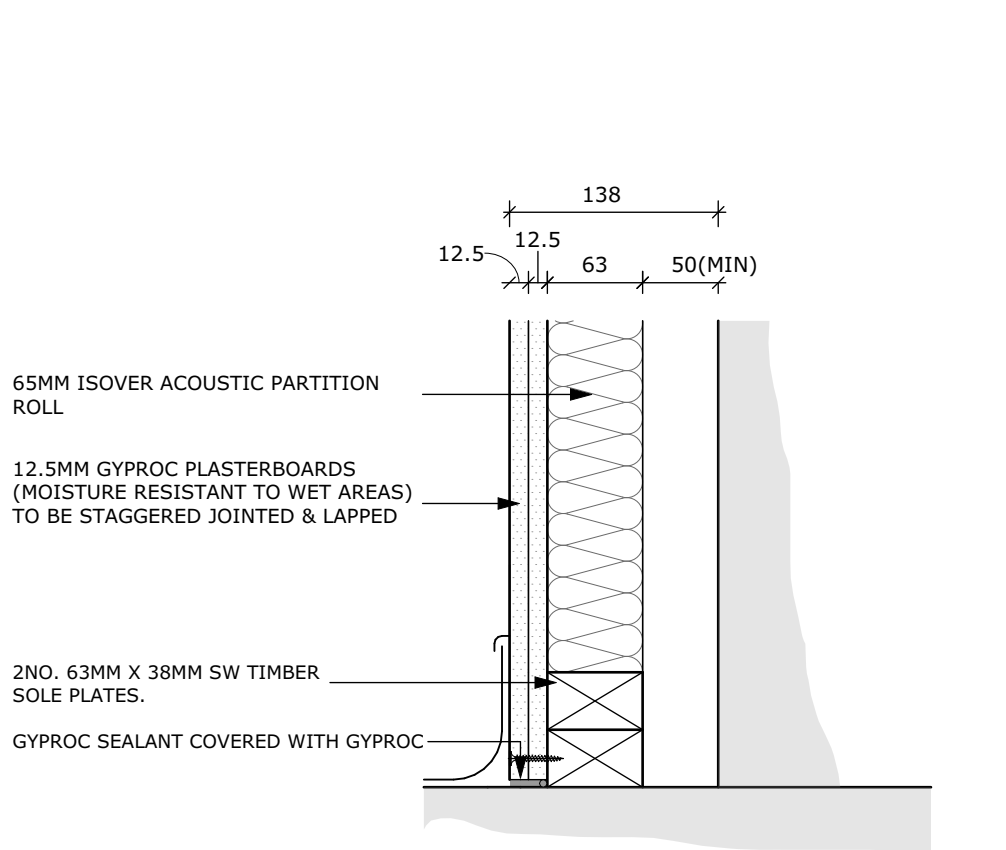
Skirting Boxing 50mm Waste Detail

Scale: 1:5



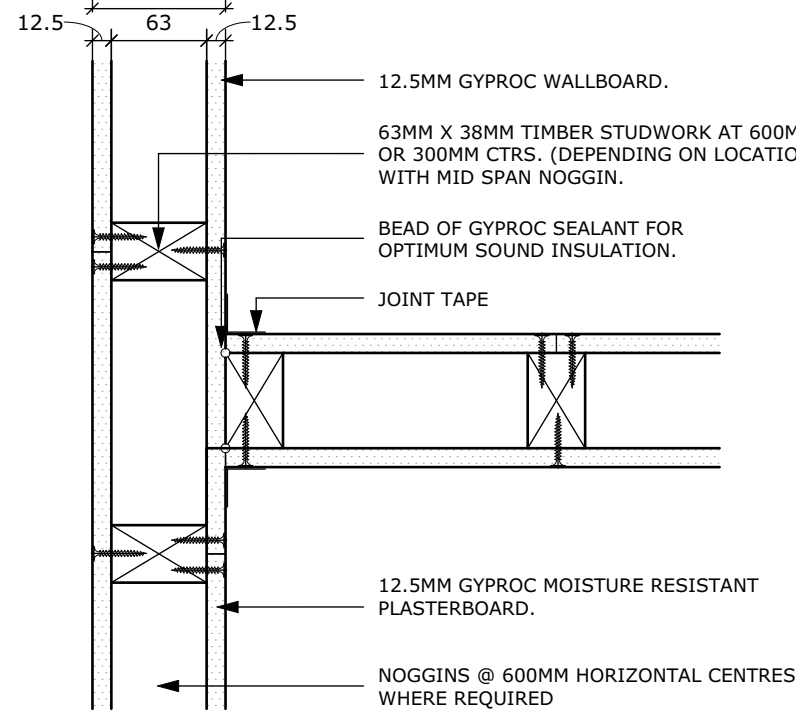
Boxing 110mm Waste Boxing (Plan)

Scale: 1:5



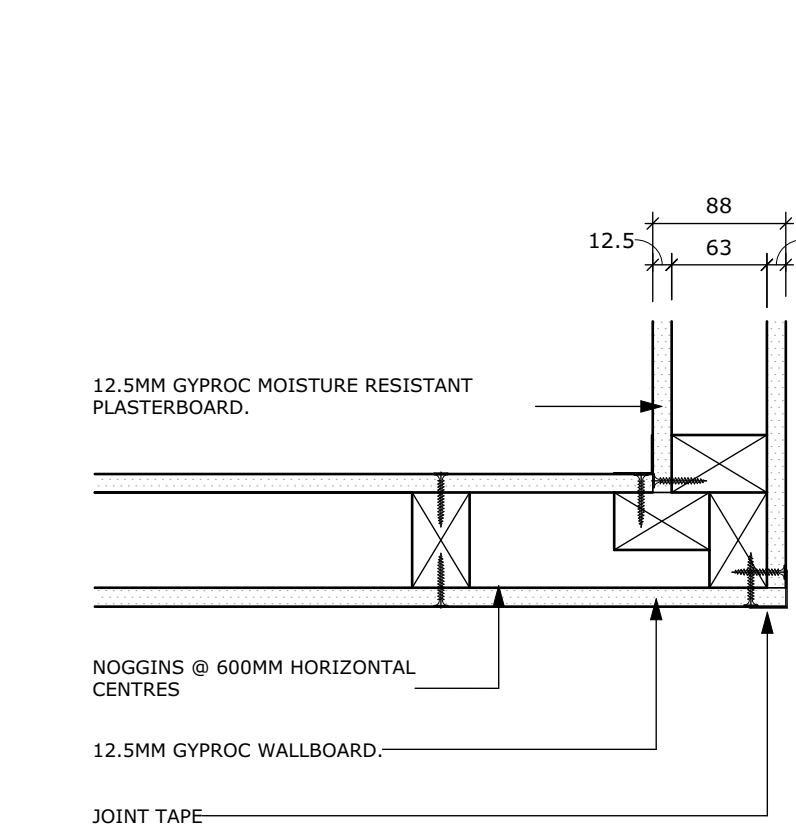
PW02 - Typical Party Wall Foot Detail

Scale: 1:5



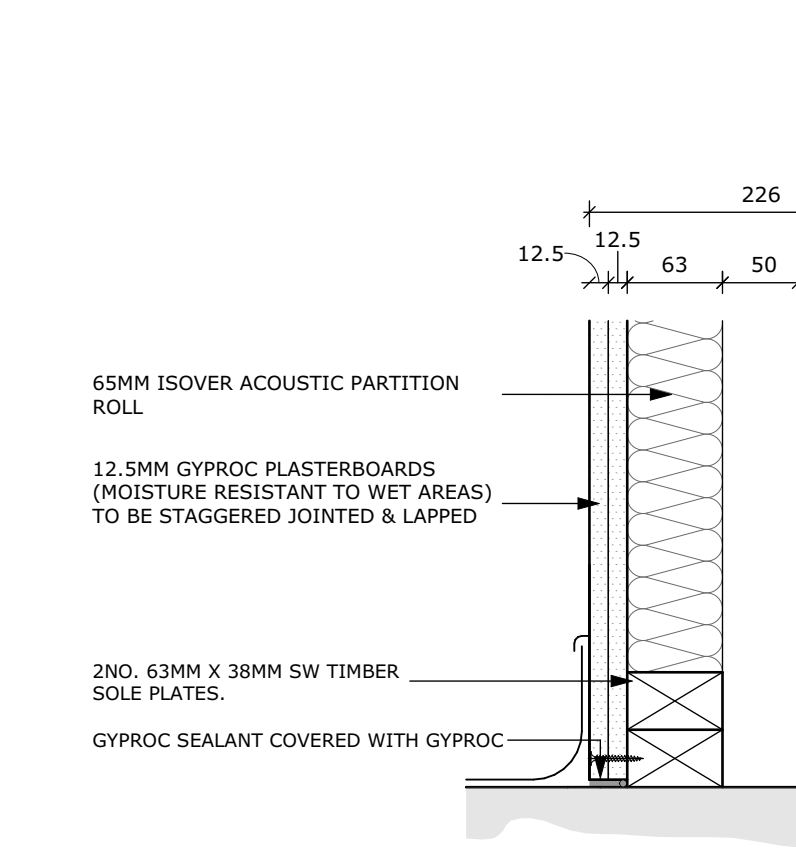
'T' Junction Between Studs Detail

Scale: 1:5



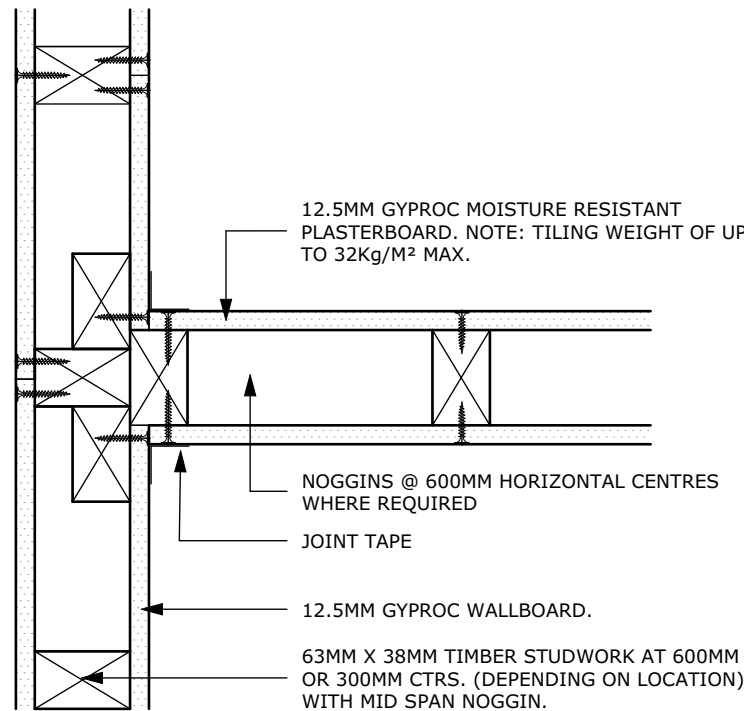
Corner Detail

Scale: 1:5



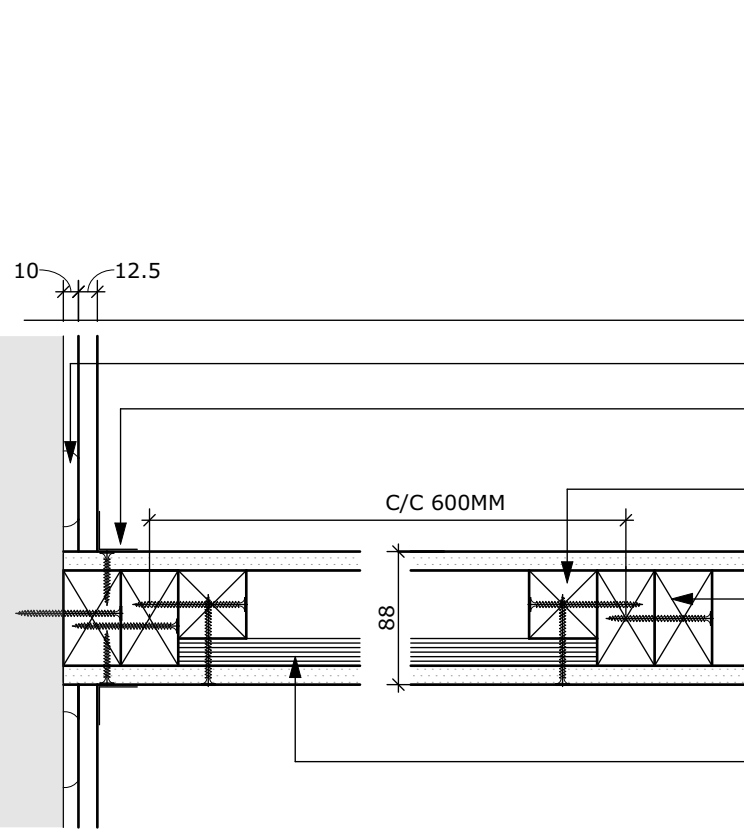
PW01 - Typical Party Wall Foot Detail

Scale: 1:5



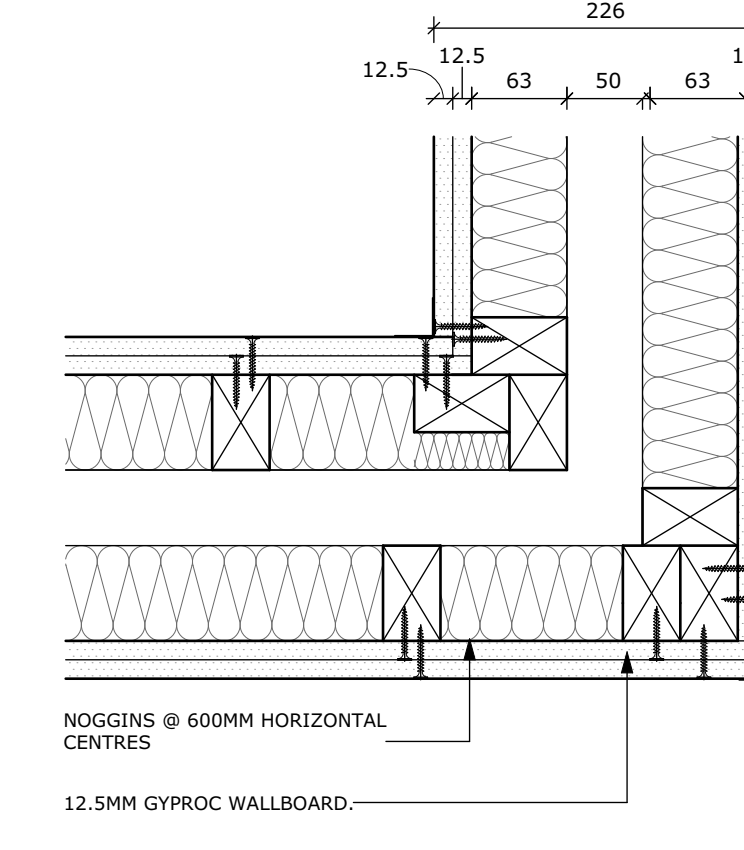
'T' Junction at Studs Detail

Scale: 1:5



Pattress Detial Detail

Scale: 1:5



PW01 - Typical Corner Detail

Scale: 1:5



Disclaimer: brp architects ltd. accept no responsibility for work not undertaken fully in accordance with the contents of this drawing and related specifications. This document and its design content is copyright protected ©. It shall be read in conjunction with all other associated project information including models, specifications, schedules and related consultants documents. Do not scale from documents. All scales noted correct at original paper size. All dimensions to be checked on site. Immediately report any discrepancies, errors or omissions on this document to the originator. If in doubt ask.

Source File
A77-6 26 Action Homeless Leicester 20231017 Onwards.pln

Rev	Date	Drawn	Note

The chance for change

1 Millers Yard
Roman Way
Market Harborough
Leicestershire
LE16 7PW
T: 01858 464986
brp-architects.com

Client
Action Homeless

Project Title
**Proposed Alterations
Mayfield House, St James Terrace /
Mayfield Road,
Leicester**

Drawing Title
Typical Stud Details

Drawing Status
Tender

Scale(s) 1:5		Original Paper Size: A1	
Drawn By KRU	Checked By (if file copy only)	Date 21.05.2024	

Document Reference:
A77-BRP-00-XX-DR-A-5001-T01